

Centennial Faces

Centennial Faces, a selection of photographs by Tallahasseean Alvan S. Harper, gives us a fresh perspective on the lives of African-American citizens in Tallahassee one hundred years ago.

The subjects of Harper's studio portraits suggest the presence of an affluent middle class within the African-American society of that time. Elaborately beaded dresses, flowered hats, and finely tailored waistcoats reflect the subjects' prosperity. Their faces express dignity and self-reliance. These Tallahasseeans appear far-removed from the hardship and poverty experienced by the majority of African-Americans after the Civil War.

The forty-nine photographs presented in this exhibit are only a fraction of the two thousand glass-plate negatives in the Alvan S. Harper Collection at the Florida Photographic Collection, Florida State Archives.

General Description

49 framed photographs and 1 framed information panel, 12" h x 15" w each;
1 framed title panel, 24" h x 15" w; 1 table-top base for exhibit catalog,
8" h x 25" w x 12" d; catalog of exhibit photographs

Space Required

60 linear feet of wall space, double-hung

Shipping Crate

1 @ 17" h x 32" w x 58" d

Shipping Weight

178 lbs

Security Requirements

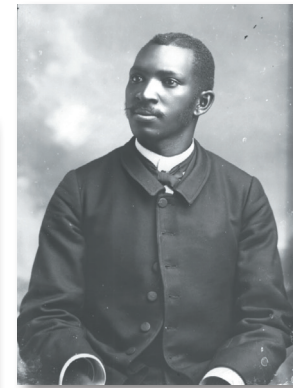
Limited

Special Note

Exhibitor must provide a table or pedestal on which to place the catalog base

Exhibit Rental Fee

\$300 / 3 months



M·F·H Florida
MUSEUM of History

Contact:

TREX Coordinator
Museum of Florida History
500 S. Bronough Street
Tallahassee, Florida 32399-0250

Phone: 850.245.6417
or find us on the Web,
MuseumofFloridaHistory.com

Division of Historical Resources
Florida Department of State

This exhibit was prepared for the Museum of Florida History by the Florida State Archives.

Suggested Layout

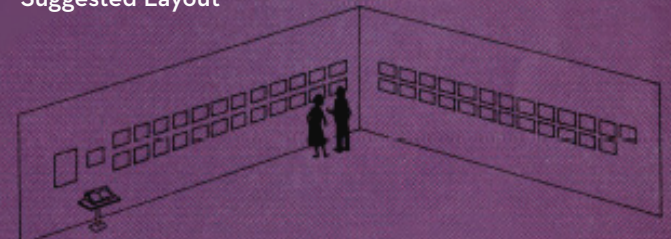


Illustration not to scale