

Centennial Faces

Centennial Faces, a selection of photographs by Tallahasseean Alvan S. Harper, provides a glimpse into the lives of Tallahassee's affluent African American middle class from the 1890s to 1910. Elaborately beaded dresses, flowered hats, and finely tailored waistcoats reflect the subjects' prosperity despite growing racial violence and segregation. The dignity and grace of the carefully composed portraits defies the derogatory depictions of African Americans found in the popular media of that day. Through his photographs, Harper captures the hopeful spirit of uplift and advancement embraced by African American communities following Reconstruction.

The forty-nine photographs presented in this exhibit are only a fraction of the two thousand glass-plate negatives in the Alvan S. Harper Collection at the Florida Photographic Collection, State Archives of Florida.

General Description

49 framed photographs and 1 framed information panel, 1 2h" x 1 5w" each; 1 framed title panel, 24"h x 1 5w"; 1 table-top base for exhibit catalog, 8"h x 25"w x 12"d; catalog of exhibit photographs.

Space Required

60 linear feet of wall space, double-hung.

Shipping Crate

1 @ 1 7"h x 32"w x 58"d.

Shipping Weight

400 lbs.

Security Requirements

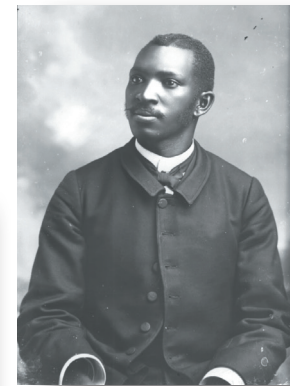
Limited.

Special Note

Exhibitor must provide a table or pedestal on which to place the catalog base.



This exhibit was prepared for the Museum of Florida History by the Florida State Archives.



M · F · H Florida
MUSEUM of History

Contact:

TREX Coordinator
Museum of Florida History
500 S. Bronough Street
Tallahassee, Florida 32399-0250
Phone: **850.245.6400**
Fax: **850.245.6433**
mftrex@dos.myflorida.com

Or find us on the Web:
museumoffloridahistory.com/exhibits/traveling-exhibits/

Division of Historical Resources * Florida Department of State

Suggested Layout



Illustration not to scale